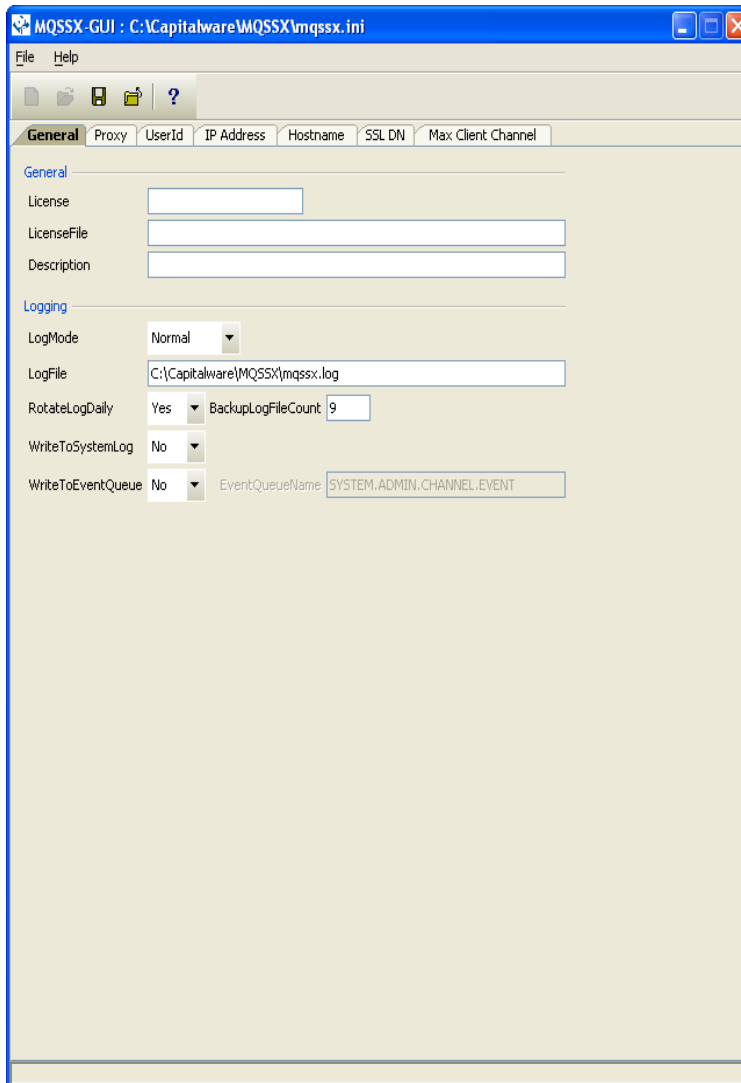


MQSSX-GUI User Guide



Capitalware Inc.
1673 Richmond Street, Suite 524
London, Ontario N6G2N3
Canada
sales@capitalware.biz
<http://www.capitalware.biz>



Table of Contents

1 INTRODUCTION.....	1
1.1 OVERVIEW.....	1
2 INSTALLATION.....	2
2.1 PREREQUISITES.....	2
2.2 SOFTWARE.....	2
2.3 HARDWARE / OS.....	2
2.4 SETTING UP AND RUNNING THE APPLICATION.....	2
2.4.1 <i>Windows Users Only with the embedded JRE:</i>	2
2.4.2 <i>Windows Users Only:</i>	3
2.4.3 <i>Unix, Linux and Max OS X:</i>	3
2.4.4 <i>OS/2 or any Windows users would do not want to run the installer program:</i>	4
3 CREATING / UPDATING INIFILES.....	5
3.1 NEW INIFILE.....	5
3.2 OPEN AN INIFILE.....	7
3.3 CLOSE AN INIFILE.....	8
3.4 SAVE INIFILE.....	10
3.5 SAVE AS INIFILE.....	11
4 TABS.....	12
4.1 GENERAL TAB.....	12
4.1.1 <i>General</i>	13
4.1.2 <i>Logging</i>	13
4.2 PROXY TAB.....	14
4.2.1 <i>Proxy File</i>	14
4.3 USERID TAB.....	15
4.3.1 <i>General</i>	16
4.3.2 <i>Allow UserID</i>	16
4.3.3 <i>Reject UserID</i>	16
4.3.4 <i>Managing UserID Filtering</i>	16
4.4 IP ADDRESS TAB.....	18
4.4.1 <i>Allow IP</i>	19
4.4.2 <i>Reject IP</i>	19
4.4.3 <i>Managing IP Address Filtering</i>	19
4.5 HOSTNAME TAB.....	21
4.5.1 <i>Allow Hostname</i>	22
4.5.2 <i>Reject Hostname</i>	22
4.5.3 <i>Managing Hostname Filtering</i>	22
4.6 SSL DN TAB.....	24
4.6.1 <i>General</i>	25
4.6.2 <i>Allow SSL DN</i>	25



4.6.3 <i>Reject SSL DN</i>	25
4.6.4 <i>Managing SSL DN Filtering</i>	26
4.7 MAX CLIENT CHANNEL TAB	27
4.7.1 <i>Set Maximum Number of Incoming Connections per Channel</i>	28
4.7.2 <i>Managing MCC entries</i>	28
5 APPENDIX A – FREQUENTLY ASKED QUESTIONS (FAQ)	30
6 APPENDIX B – SUPPORT	31
7 APPENDIX C – SUMMARY OF CHANGES	32
8 APPENDIX D – LICENSE AGREEMENT	33
9 APPENDIX E – NOTICES	35

1 Introduction

1.1 Overview

MQSSX-GUI application allows the user to create or update MQSSX IniFiles.

MQ Standard Security Exit (MQSSX) is a solution that allows a company to control and restrict who is accessing a WebSphere MQ resource. The security exit will operate with WebSphere MQ v5.3, v6.0 and v7.0 (and MQSeries v5.2) in Windows, iSeries (OS/400), Unix and Linux environments. It works with Server Connection, Receiver, Requestor and Cluster-Receiver channels of WebSphere MQ queue manager.

MQSSX-GUI creates or updates IniFiles that are located on server-side security exit.

MQSSX-GUI can run on any platform that supports Java v1.5 (or higher). This includes: AIX, HP-UX, Linux, Mac OS X, OS/2 Warp, Sun Solaris and Windows NT/2000/XP/Vista/7.

2 Installation

This chapter will describe the installation and configuration (optional) of MQSSX-GUI. For Windows users, the installation of MQSSX-GUI is very simple and straightforward. Other Operating Systems will need to unzip the downloaded software package.

2.1 Prerequisites

This section lists the required hardware and software components needed to run the MQSSX-GUI application.

2.2 Software

The following third party software components must be installed in order to properly run MQSSX-GUI:

- Java Runtime Environment (JRE) 1.5 (or higher) or Java 2 SDK, Standard Edition (J2SE) v1.5 (or higher)

2.3 Hardware / OS

MQSSX-GUI is capable of running on the following hardware platforms that support Java v1.5 (or higher):

- AIX
- HP-UX
- Linux
- Mac OS X
- OS/2 Warp
- Sun Solaris
- Windows NT/2000/XP/Vista/7

2.4 Setting Up and Running the Application

The following section provides instructions on installing and running the MQSSX-GUI application:

2.4.1 Windows Users Only with the embedded JRE:

- MQSSX-GUI can be installed with an embedded JRE (Sun J2SE v1.6.0) by running the install program called: **mqssxgui-setup-withjre.exe**
- The installer follows the standard Windows install procedures and provides default values for the user.
- When the install program has completed execution, there will be a newly created folder under **Start -> Program Files** called **MQSSX-GUI**.
- To run **MQSSX-GUI**, select the **MQSSX-GUI** icon from within the **MQSSX-GUI** folder.

2.4.2 Windows Users Only:

- MQSSX-GUI can be installed by running the install program called: **mqssxgui-setup.exe**
- The installer follows the standard Windows install procedures and provides default values for the user.
- When the install program has completed execution, there will be a newly created folder under **Start -> Program Files** called **MQSSX-GUI**.
- To run **MQSSX-GUI**, select the **MQSSX-GUI** icon from within the **MQSSX-GUI** folder.

2.4.3 Unix, Linux and Max OS X:

Or any Windows users would do not want to run the installer program.

- MQSSX-GUI is provided as a zip file: **mqssxgui.zip**
- To unzip the file, open a shell prompt and execute the following commands:

```
unzip mqssxgui.zip
```

- When the unzip command has finished, there should be a directory tree as follows:

```
Capitalware/MQSSX-GUI
```

- Change directory to **Capitalware/MQSSX-GUI**

```
cd Capitalware/MQSSX-GUI
```

- Before running MQSSX-GUI for the first, you need to add the execute attribute to the mqssxgui.sh shell scripts. Do the following:

```
chmod +x mqssxgui.sh
```

- To run **MQSSX-GUI** from the **Capitalware/MQSSX-GUI** directory, for AIX, HP-UX, Linux, Mac OS X, and Solaris type the following:

```
./mqssxgui.sh
```

2.4.4 OS/2 or any Windows users would do not want to run the installer program:

- MQSSX-GUI is provided as a zip file: **mqssxgui.zip**
- To unzip the file, open a shell prompt and execute the following commands:

```
unzip mqssxgui.zip
```

- When the unzip command has finished, there should be a directory tree as follows:

```
Capitalware/MQSSX-GUI
```

- To run **MQSSX-GUI**, do the following:

- Open Command Prompt window, and then type the command:

Change directory to **Capitalware\MQSSX-GUI** and then execute the MQSSX-GUI command:

On OS/2:

```
cd Capitalware\MQSSX-GUI  
mqssxgui_os2.bat
```

On Windows:

```
cd Capitalware\MQSSX-GUI  
mqssxgui.bat
```

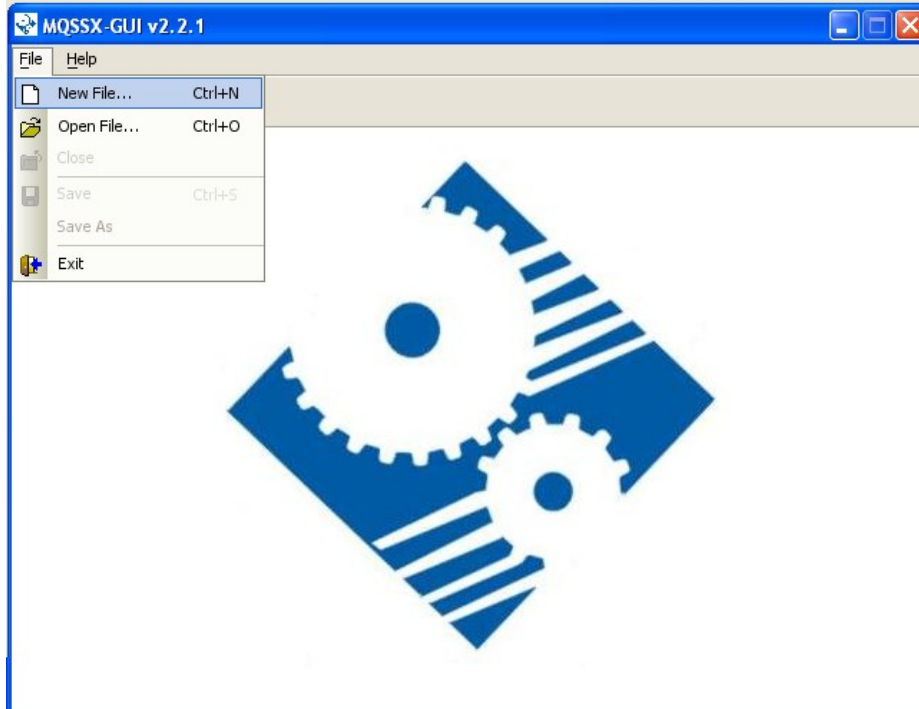
3 Creating / Updating IniFiles

This chapter will describe the how to create and/or update IniFiles.

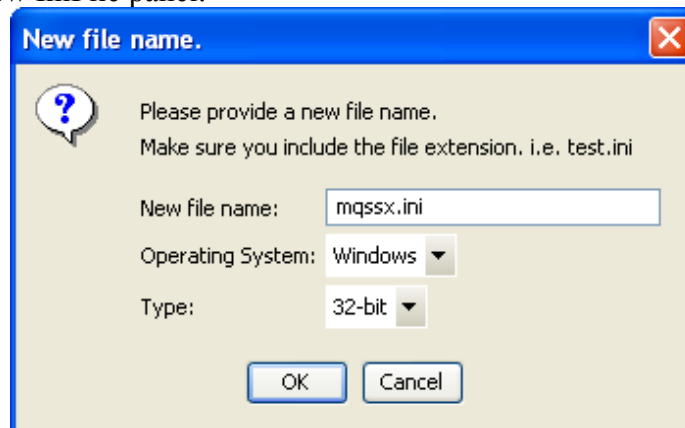
3.1 New IniFile

This section will describe how to create a new MQSSX IniFile. The IniFile can be for a local or remote MQSSX implementation.

From the main menu of MQSSX-GUI, select **File** then **New File**



The following is the New IniFile panel:



Fill in the following information:

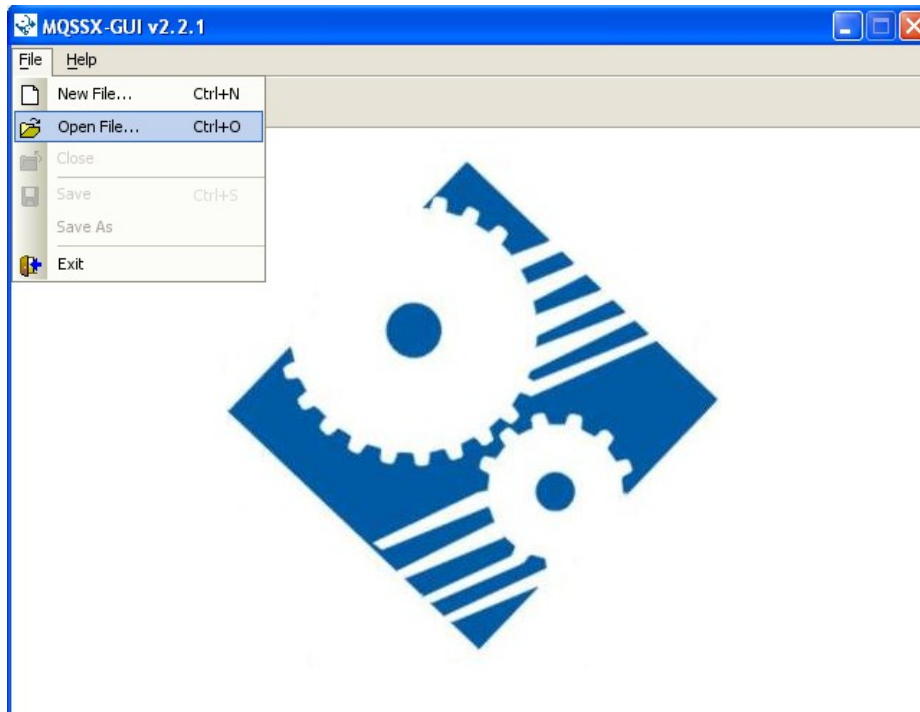
- Input a file name including the extension of '.ini'
- Select the Operating System
- Choose between a 32-bit or 64-bit environment

Finally, click the **Ok** button to create and open the new MQSSX IniFile.

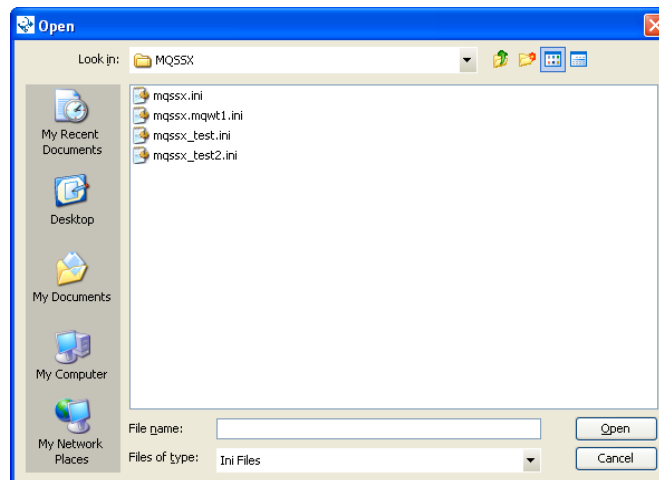
3.2 Open an IniFile

This section will describe how to open a MQSSX IniFile to be viewed or edited. The IniFile can be for a local or remote MQSSX implementation.

From the main menu of MQSSX-GUI, select **File** then **Open File**



The following is the **Open** dialog box:

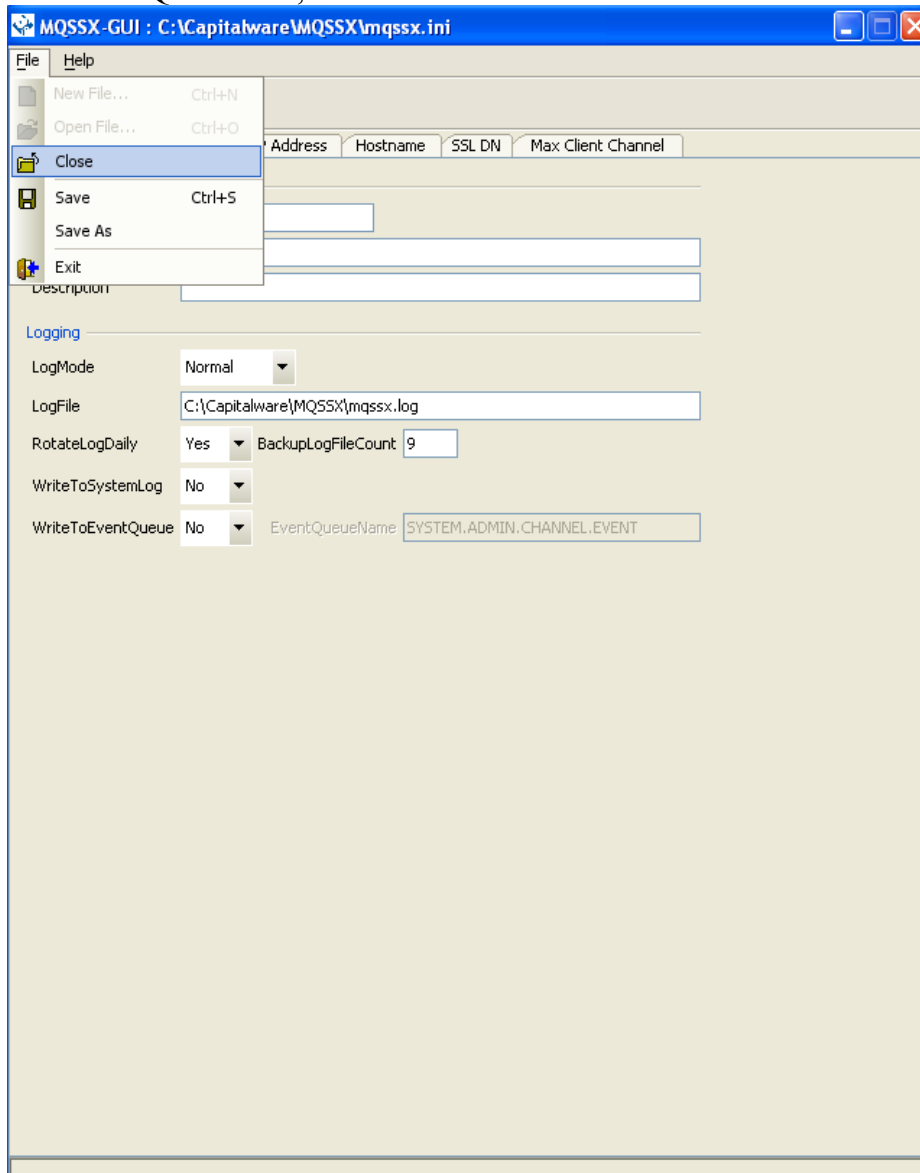


Select the IniFile that you wish to view / edit and then press the **Open** button.

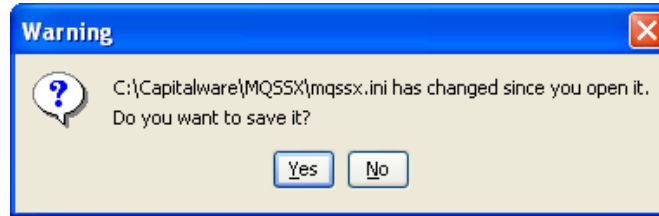
3.3 Close an IniFile

This section will describe how to close a MQSSX IniFile.

From the main menu of MQSSX-GUI, select **File** then **Close**



If the user has altered the IniFile then the user will be presented with the following dialog box:



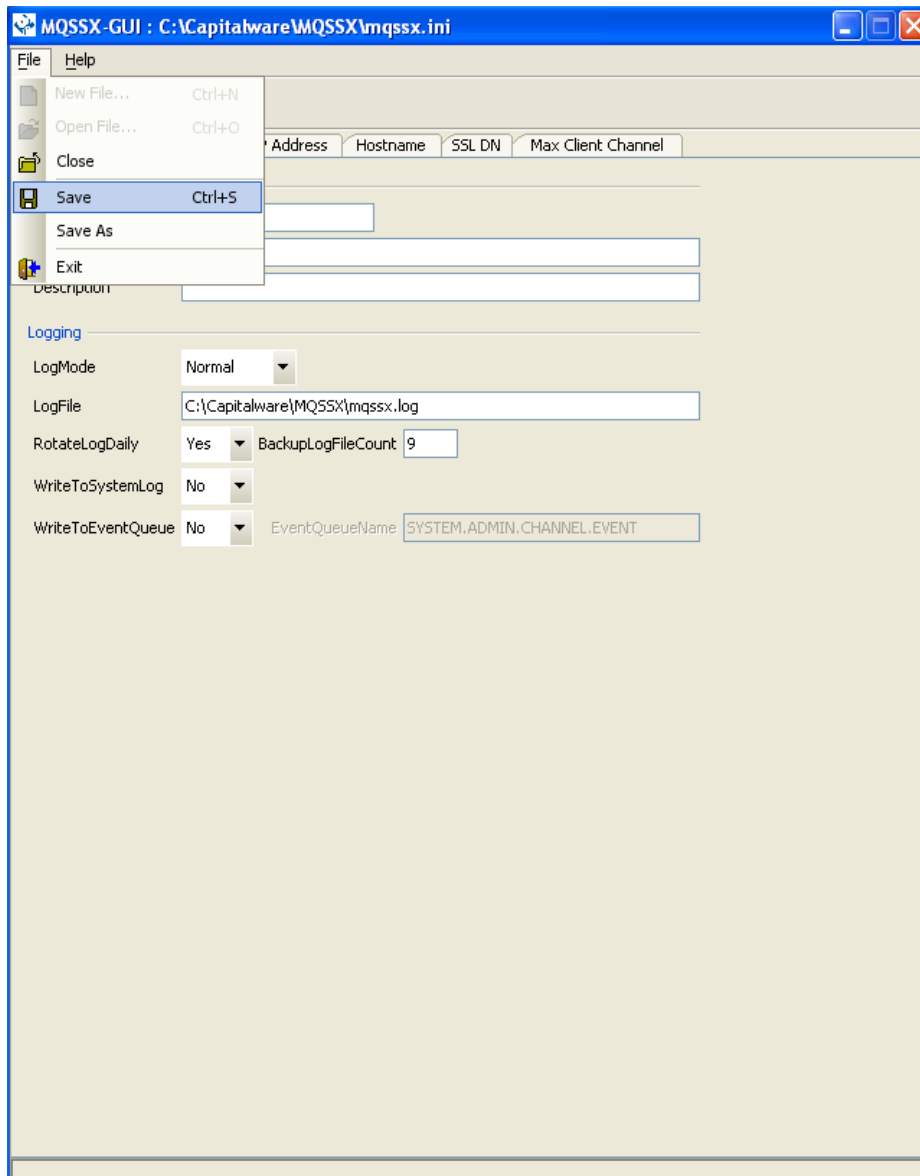
Select **Yes** to save the changes otherwise select **No**.

The MQSSX-GUI program will make a backup of the original file in the same directory called: *{inifilename}.backup*

3.4 Save IniFile

This section will describe how to save an open MQSSX IniFile.

From the main menu of MQSSX-GUI, select **File** then **Save**



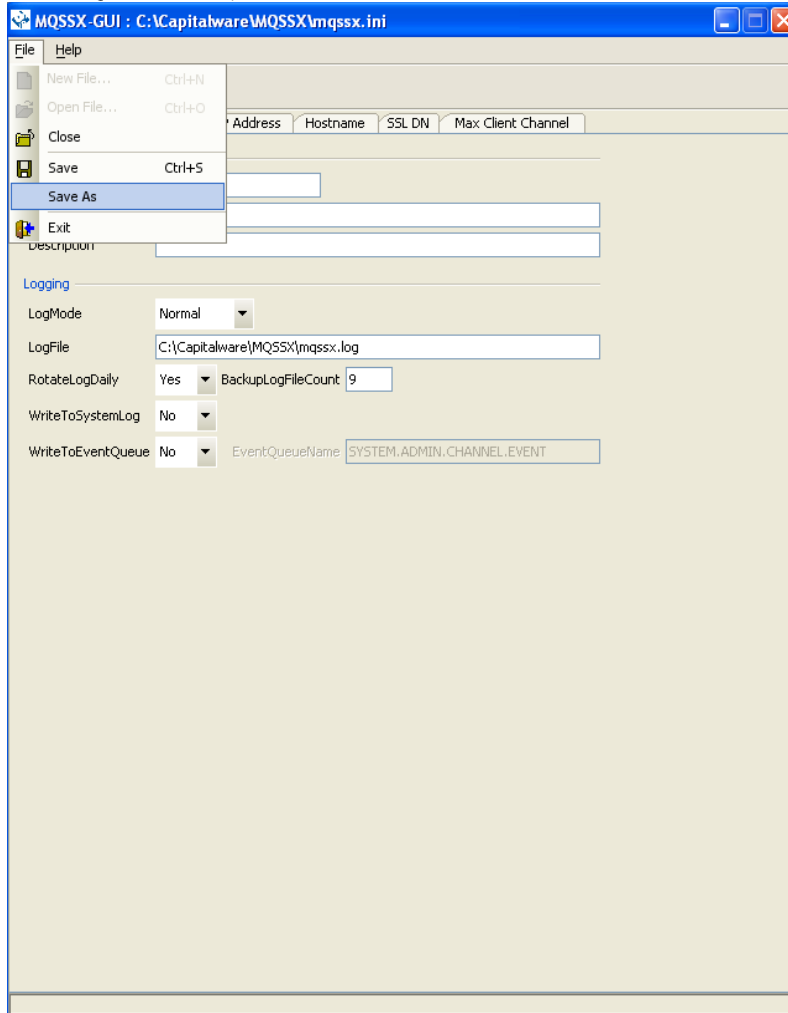
The parameter information will be saved to the IniFile.

The MQSSX-GUI program will make a backup of the original file in the same directory called: *{inifilename}.backup*

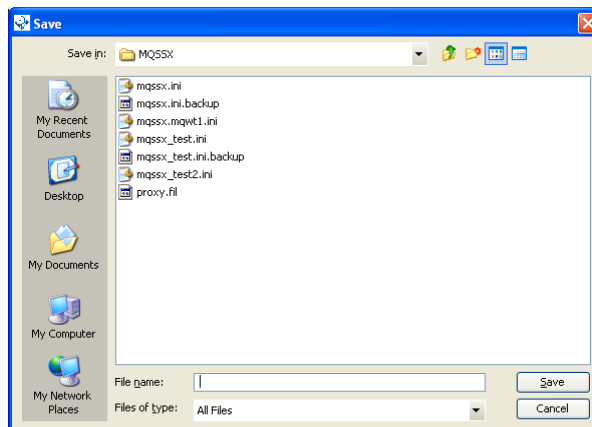
3.5 Save As IniFile

This section will describe how to save an open MQSSX IniFile.

From the main menu of MQSSX-GUI, select **File** then **Save As**



Select / Input the IniFile name that you wish use then press the **Save** button.



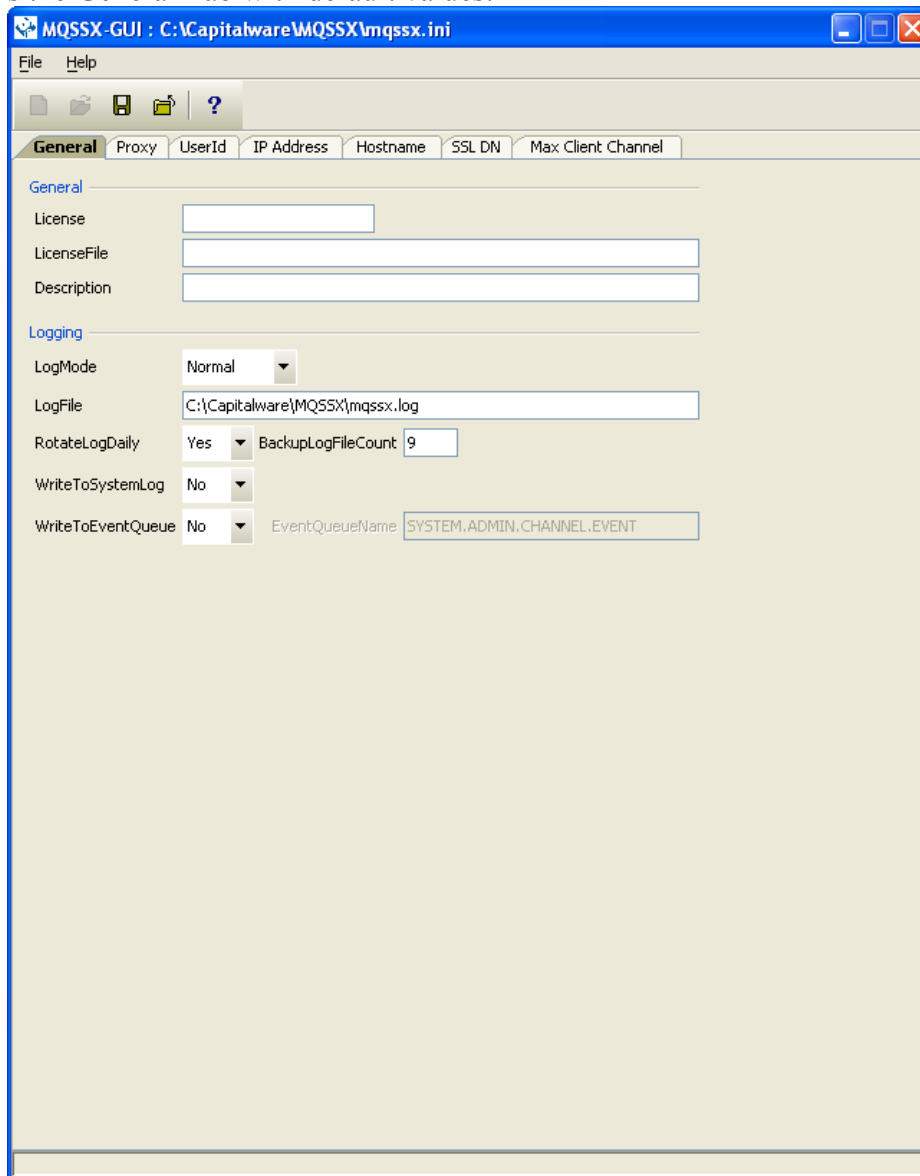
4 Tabs

This chapter will describe the various parameters on each tab.

4.1 General Tab

This section will describe various parameters on the General tab of a MQSSX IniFile.

The following is the General Tab with default values:



The following are the IniFile parameters on the General Tab:

4.1.1 General

This section describes the general keywords and their values.

- **License key** is provided by Capitalware Inc. and is the mechanism on to license MQSSX to a particular queue manager. Your license will look something like: 0000-AAAA-BBBBBBBB (Note: This is a sample license only and will NOT work).
- **LicenseFile** specifies the location of License file that contains all of the customer's license keys. The following are the default values for LicenseFile:
 - For Windows: C:\Capitalware\MQSSX\mqssx_licenses.ini
 - For WebSphere MQ v5.3 or v6.0 (32-bit) on Unix and Linux: /var/mqm/exits/mqssx_licenses.ini
 - For WebSphere MQ v6.0 (64-bit) on Unix and Linux: /var/mqm/exits64/mqssx_licenses.ini
 - For IBM i: /QIBM/UserData/mqm/mqssx/mqssx_licenses.ini
- **Description** parameter is optional and is not used by MQSSX. It can be used to provide a brief description / purpose of the IniFile.

4.1.2 Logging

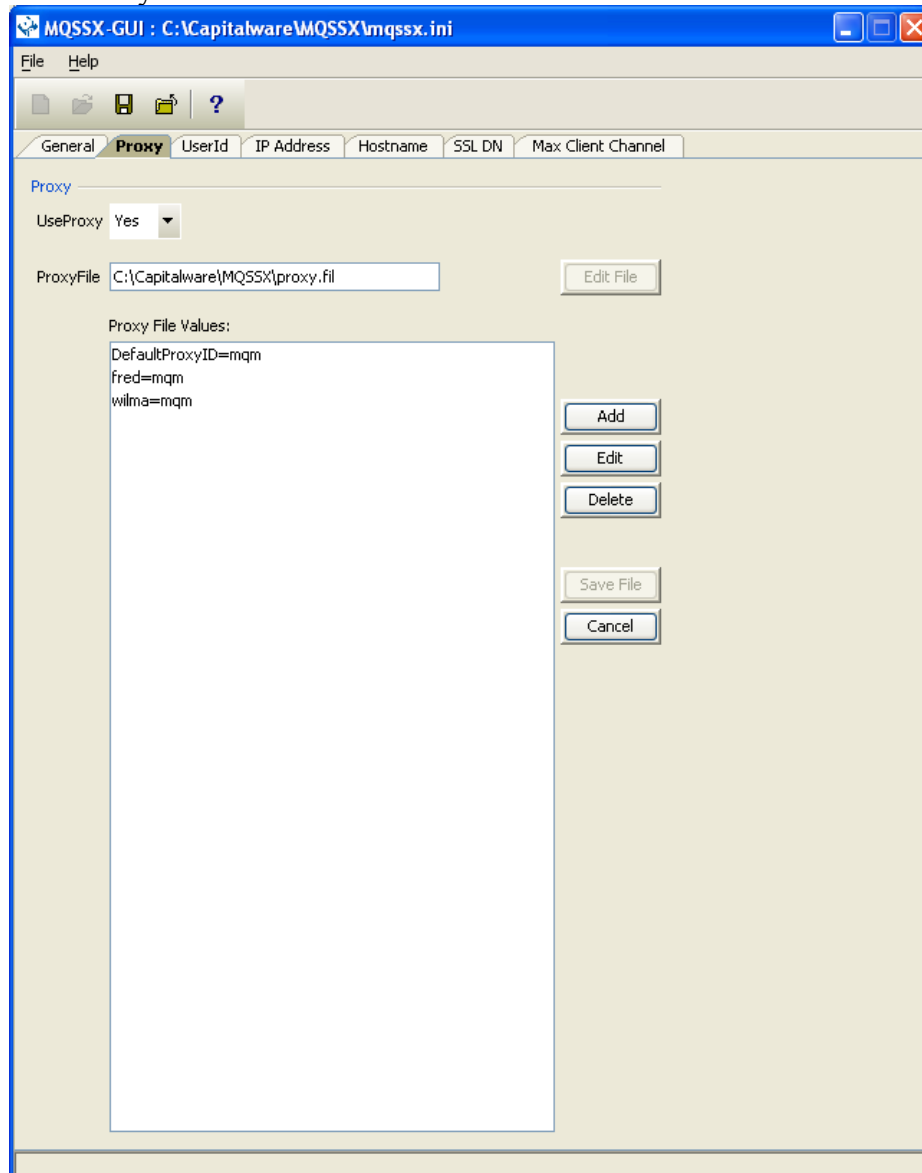
This section describes the keywords related to logging and their values.

- **LogMode** specifies what type of logging the user wishes to have. LogMode supports 4 values: Quiet, Normal, Verbose and Debug. The default value is Normal.
- **LogFile** specifies the location of the log file. The default is as follows:
 - For Windows: C:\Capitalware\MQSSX\mqssx.log
 - For WebSphere MQ v5.3 or v6.0 (32-bit) on Unix and Linux: /var/mqm/exits/mqssx.log
 - For WebSphere MQ v6.0 (64-bit) on Unix and Linux: /var/mqm/exits64/mqssx.log
 - For IBM I: /QIBM/UserData/mqm/mqssx/mqssx.log
- **RotateLogDaily** specifies whether or not MQSSX when auto-rotate the log files. The default value is Yes.
- **BackupLogFileCount** specifies the number of backup log files to be kept / retained. The default value is 9.
- **WriteToSystemLog** specifies for each connection attempt that a log entry be written to the system log.
 - For Windows this would be the **Event Log**
 - For Unix and Linux this would be the **syslog**.
- **WriteToEventQueue** specifies for each failed connection attempt that a log entry be written to the specified event queue.
- **EventQueueName** specifies the name of the queue that the event message will be written to. The default is as follows: 'SYSTEM.ADMIN.CHANNEL.EVENT'.

4.2 Proxy Tab

This section will describe various parameters on the Proxy tab of a MQSSX IniFile.

The following is the Proxy Tab with default values:



4.2.1 Proxy File

This section describes the necessary steps to enable the use of 'Proxy IDs'. Proxy ID allows an authorized User to use a different UserID for MQ interactions.

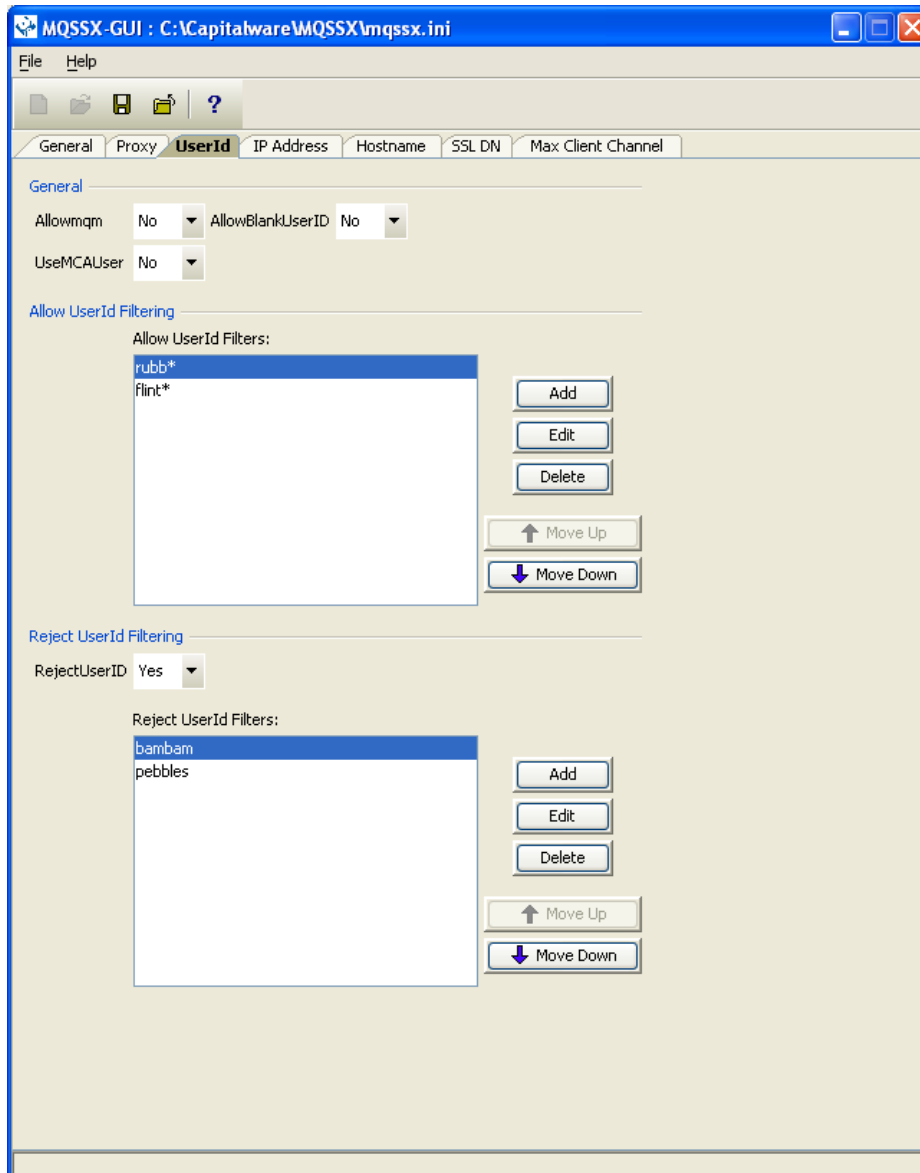
The following are the IniFile parameters on the Proxy Tab:

- **UseProxy** allows an authorized User to use a different UserID for MQ interactions.
- **ProxyFile** specifies the location of the file to do alternate UserID look-up.

4.3 UserId Tab

This section will describe various parameters on the UserId tab of a MQSSX IniFile.

The following is the UserId Tab with default values:



The following are the IniFile parameters on the UserId Tab:

4.3.1 General

This section describes the necessary steps to enable the use of the general options for the UserId tab.

- **Allowmqm** enables users to login with the mqm or MUSR_MQADMIN or QMQM system account. This is controlled by the IniFile's property keyword 'Allowmqm'. Setting 'Allowmqm' to Yes will activate this feature; otherwise, it will be blocked.
- **AllowBlankUserId** enables connection to have a blank UserID. This is controlled by the IniFile's property keyword 'AllowBlankUserID'. Setting 'AllowBlankUserID' to 'Yes' will allow connections to have a blank UserID.
- **UseMCAUser** allows the connection to use the UserID value specified in the channel's MCAUSER field.

4.3.2 Allow UserID

This section describes the necessary steps to enable the use of filtering of the incoming UserID.

- **UseAllowUserID** enables the feature to allow or to restrict the incoming UserID by using a regular expression pattern. The server-side security exit will look up the regular expression pattern from the 'AllowUserID' property keyword.
- **AllowUserID Filters** is a list of UserIDs (with wildcards) that are allowed to connect to queue manager or particular channel.

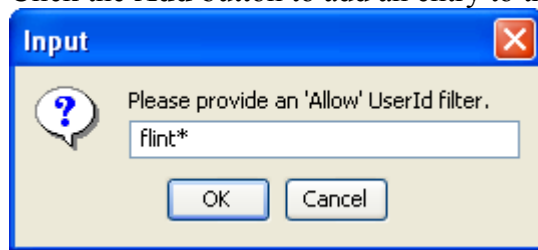
4.3.3 Reject UserID

This section describes the necessary steps to explicitly reject an incoming UserID.

- **UseRejectUserID** enables the feature to reject an the incoming UserID by using a regular expression pattern. The server-side security exit will look up the regular expression pattern from the 'RejectUserID' property keyword.
- **RejectUserID Filters** is a list of UserIDs (with wildcards) that are explicitly rejected.

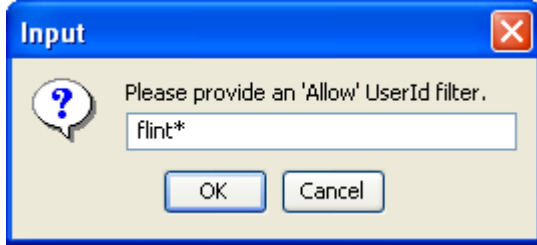
4.3.4 Managing UserID Filtering

This section describes the necessary steps to manage UserID filtering entries. Click the **Add** button to add an entry to the list.



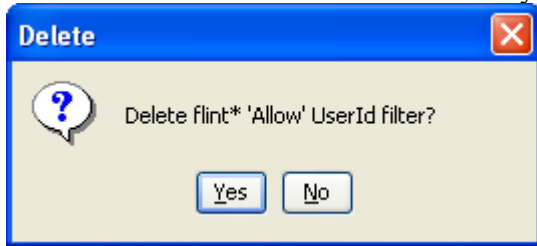
Input the UserID including wildcards and then click the **Ok** button.

Click the **Edit** button to update an entry in the list.



Update the UserID including wildcards and then click the **Ok** button.

Click the **Delete** button to delete an entry in the list.

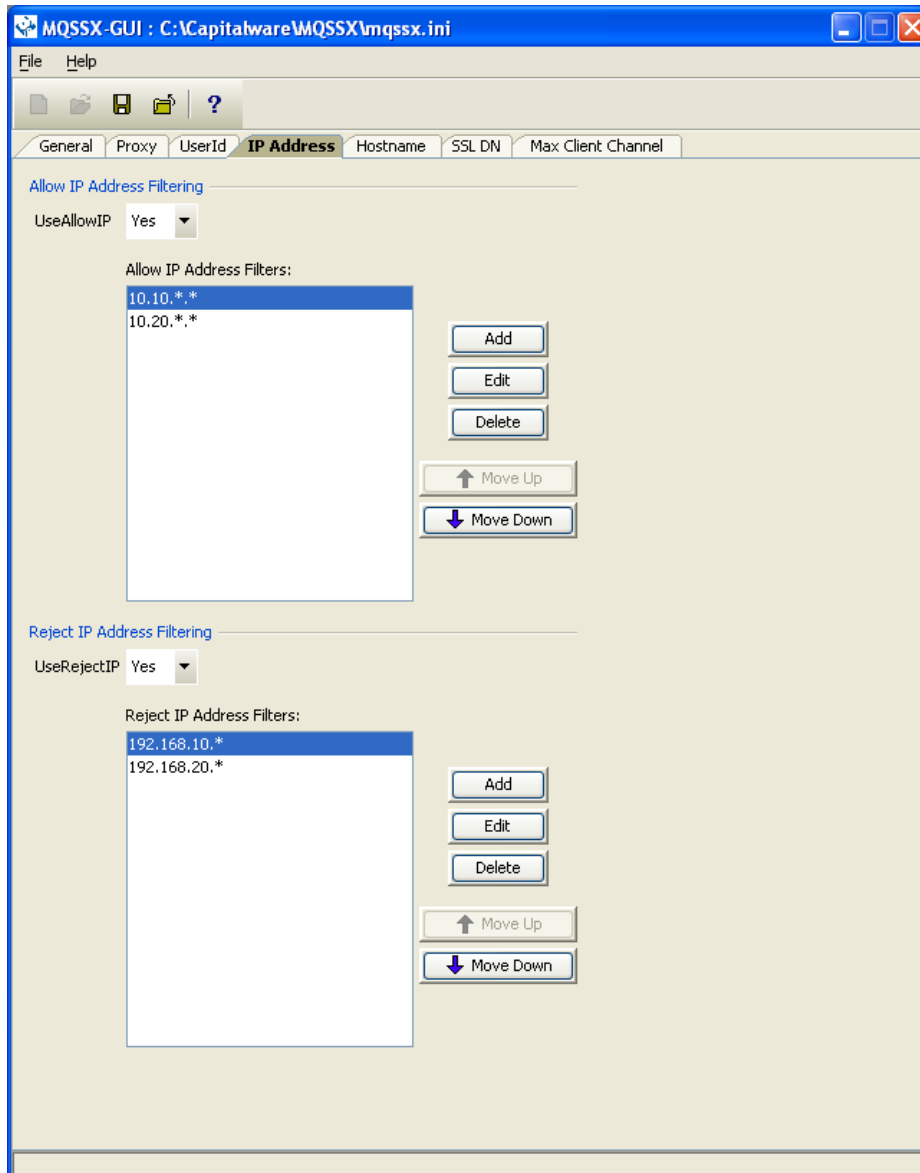


Click the **Yes** button to permanently remove the entry from the list.

4.4 IP Address Tab

This section will describe various parameters on the IP Address tab of a MQSSX IniFile.

The following is the IP Address Tab with default values:



The following are the IniFile parameters on the IP Address Tab:

4.4.1 Allow IP

This section describes the necessary steps to enable the use of filtering of the incoming IP address.

➤ **UseAllowIP** to allow or restrict an incoming IP address by using a regular expression pattern. This is controlled by the IniFile's property keyword 'UseAllowIP'. Setting 'UseAllowIP' to 'Yes' will cause the server-side security exit to look up the regular expression pattern from the 'AllowIP' property keyword.

➤ **IP Address Filters** is a list of IP Addresses (with wildcards) that are allowed to connect to queue manager or particular channel.

4.4.2 Reject IP

This section describes the necessary steps to explicitly reject an incoming IP address.

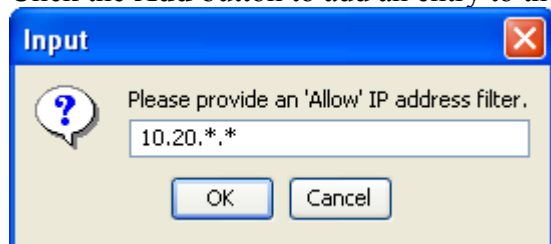
➤ **UseRejectIP** to explicitly reject an incoming IP address by using a regular expression pattern. This is controlled by the IniFile's property keyword 'UseRejectIP'. Setting 'UseRejectIP' to 'Yes' will cause the server-side security exit to look up the regular expression pattern from the 'RejectIP' property keyword.

➤ **Reject IP Filters** is a list of IP Addresses (with wildcards) that are explicitly rejected.

4.4.3 Managing IP Address Filtering

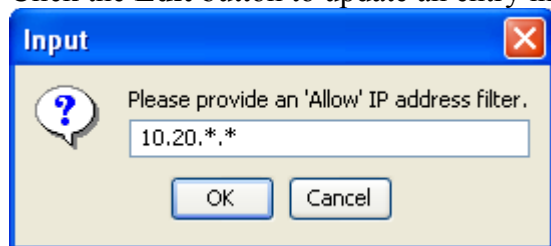
This section describes the necessary steps to manage IP address filtering entries.

Click the **Add** button to add an entry to the list.



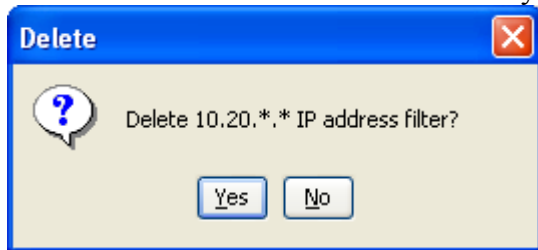
Input the IP Filter including wildcards and then click the **Ok** button.

Click the **Edit** button to update an entry in the list.



Update the IP Filter including wildcards and then click the **Ok** button.

Click the **Delete** button to delete an entry in the list.

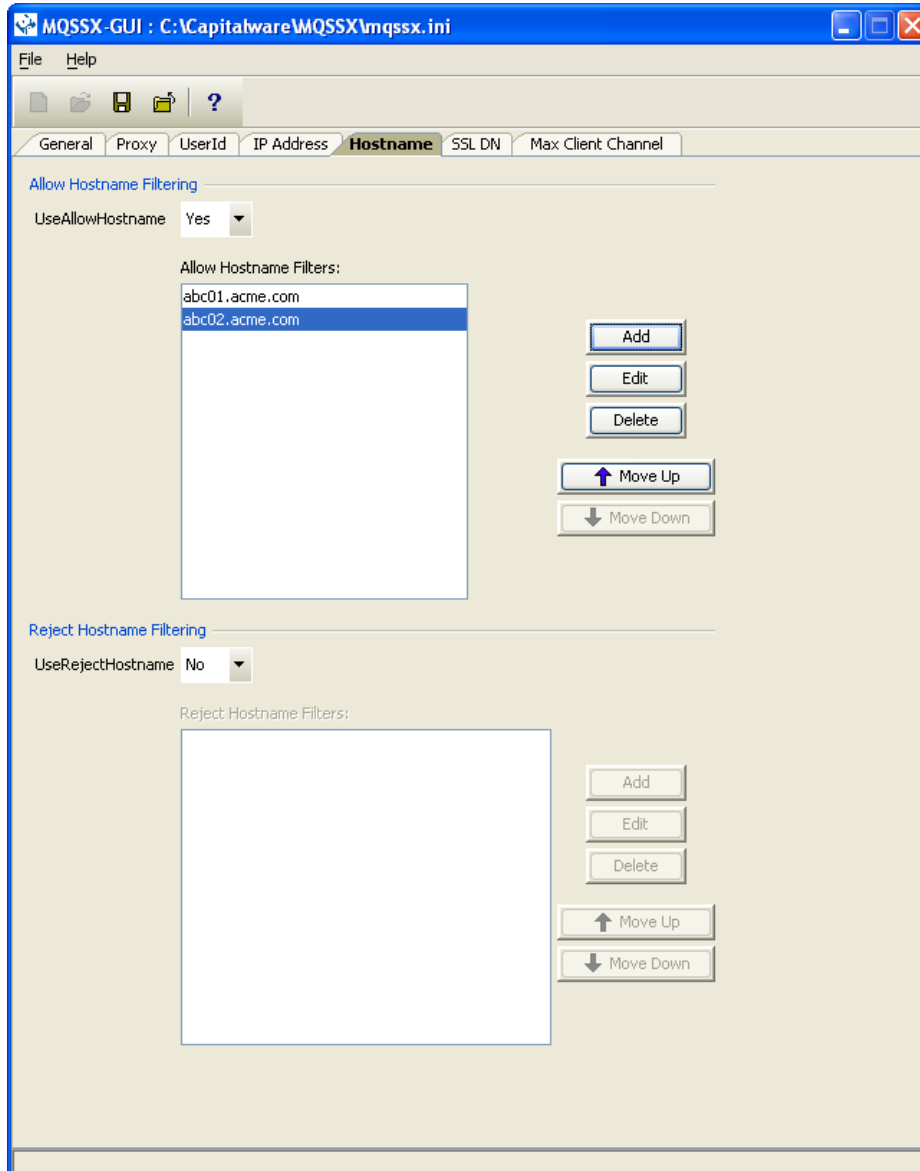


Click the **Yes** button to permanently remove the entry from the list.

4.5 Hostname Tab

This section will describe various parameters on the Hostname tab of a MQSSX IniFile.

The following is the Hostname Tab with default values:



The following are the IniFile parameters on the Hostname Tab:

4.5.1 Allow Hostname

This section describes the necessary steps to enable the use of filtering of the incoming Hostname.

- **UseAllowHostname** to allow or restrict an incoming Hostname by using a regular expression pattern. This is controlled by the IniFile's property keyword 'UseAllowHostname'. Setting 'UseAllowHostname' to 'Yes' will cause the server-side security exit to look up the regular expression pattern from the 'AllowHostname' property keyword.
- **Hostname Filters** is a list of Hostnames (with wildcards) that are allowed to connect to queue manager or particular channel.

4.5.2 Reject Hostname

This section describes the necessary steps to explicitly reject an incoming Hostname.

- **UseRejectHostname** to explicitly reject an incoming Hostname by using a regular expression pattern. This is controlled by the IniFile's property keyword 'UseRejectHostname'. Setting 'UseRejectHostname' to 'Yes' will cause the server-side security exit to look up the regular expression pattern from the 'RejectHostname' property keyword.
- **Reject Hostname Filters** is a list of Hostnames (with wildcards) that are explicitly rejected.

4.5.3 Managing Hostname Filtering

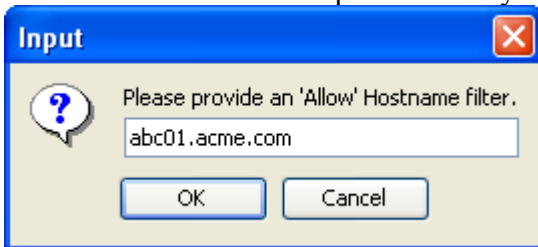
This section describes the necessary steps to manage Hostname filtering entries.

Click the **Add** button to add an entry to the list.



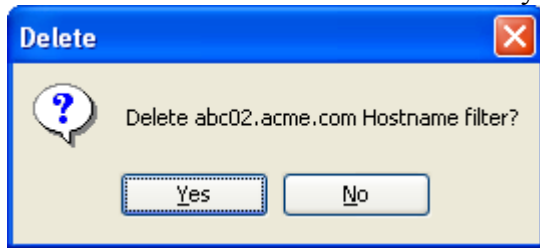
Input the Hostname Filter including wildcards and then click the **Ok** button.

Click the **Edit** button to update an entry in the list.



Update the Hostname Filter including wildcards and then click the **Ok** button.

Click the **Delete** button to delete an entry in the list.

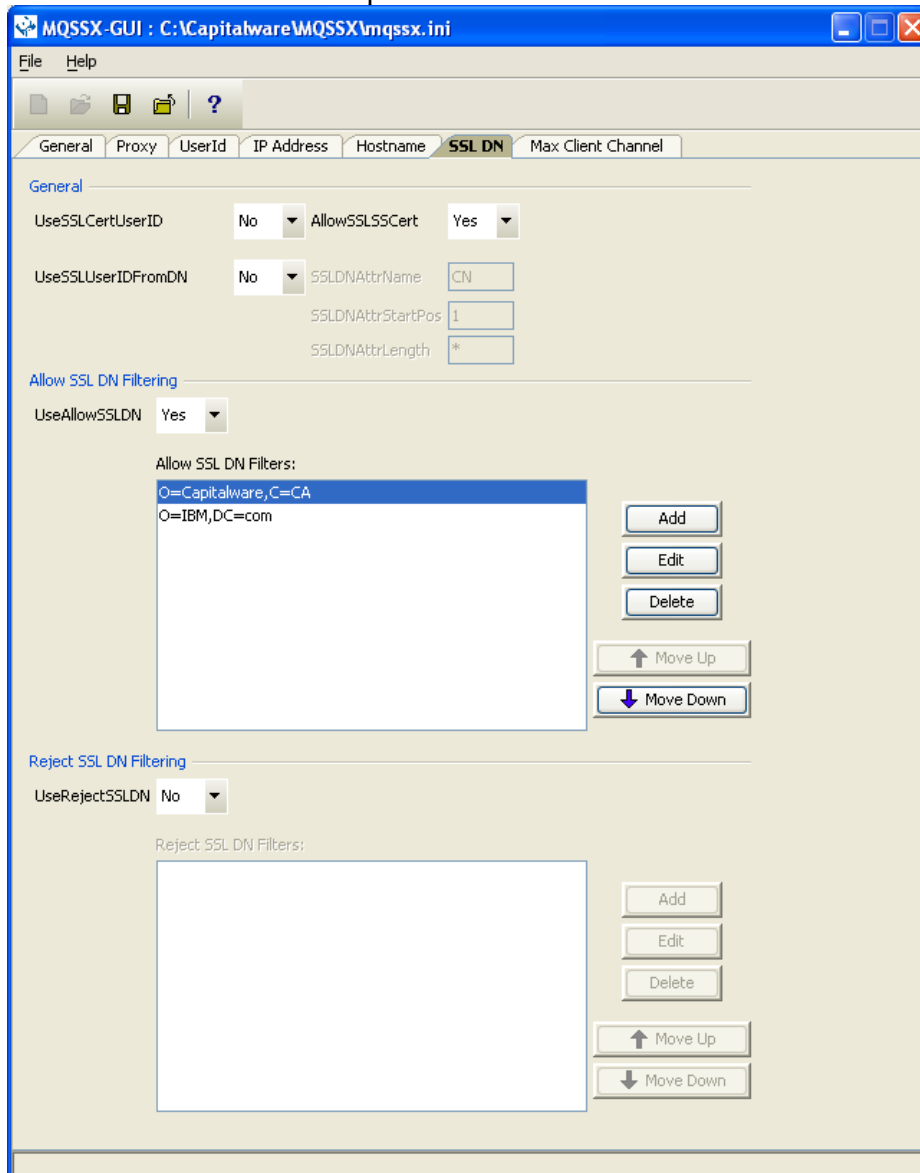


Click the **Yes** button to permanently remove the entry from the list.

4.6 SSL DN Tab

This section will describe various parameters on the SSL DN tab of a MQSSX IniFile.

The following is the SSL DN Tab with sample values:



The following are the IniFile parameters on the SSL DN Tab:

4.6.1 General

This section describes the necessary steps to enable the use of the general options for the SSL DN tab.

- **UseSSLCertUserID** allows the connection to use the UserID value specified in the channel's SSLCertUserID field.
- **AllowSSLSSCert** allows or rejects a connection with a Self-Signed Certificate.
- **UseSSLSSLDNFromDN** specifies that the UserID is to be retrieved from a SSL DN entry.
- **SSLSSLDNAttrName** specifies the SSL DN attribute field name
- **SSLDNAttrStartPos** specifies the start position of the retrieval
- **SSLDNAttrLength** specifies the length of the field to be extracted (* means all)

4.6.2 Allow SSL DN

This section describes the necessary steps to enable the use of filtering of the incoming SSL DN.

- **UseAllowSSL DN** enables the feature to allow or to restrict the incoming SSL DN by using a regular expression pattern. The server-side security exit will look up the regular expression pattern from the 'AllowSSL DN' property keyword.
- **AllowSSL DN Filters** is a list of SSL DNs (with wildcards) that are allowed to connect to queue manager or particular channel.

4.6.3 Reject SSL DN

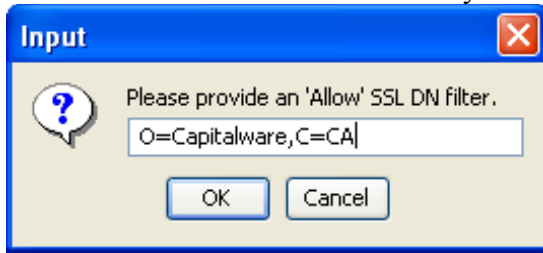
This section describes the necessary steps to explicitly reject an incoming SSL DN.

- **UseRejectSSL DN** enables the feature to reject an the incoming SSL DN by using a regular expression pattern. The server-side security exit will look up the regular expression pattern from the 'RejectSSL DN' property keyword.
- **RejectSSL DN Filters** is a list of SSL DNs (with wildcards) that are explicitly rejected.

4.6.4 Managing SSL DN Filtering

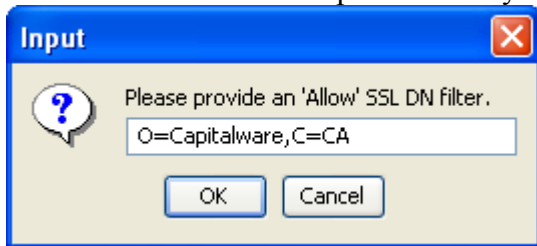
This section describes the necessary steps to manage SSL DN filtering entries.

Click the **Add** button to add an entry to the list.



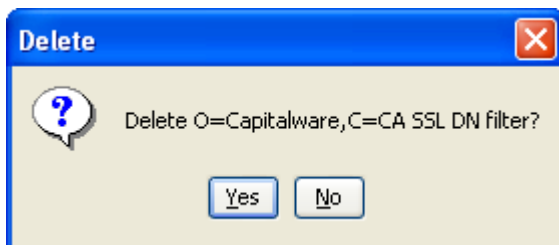
Input the SSL DN including wildcards and then click the **Ok** button.

Click the **Edit** button to update an entry in the list.



Update the SSL DN including wildcards and then click the **Ok** button.

Click the **Delete** button to delete an entry in the list.

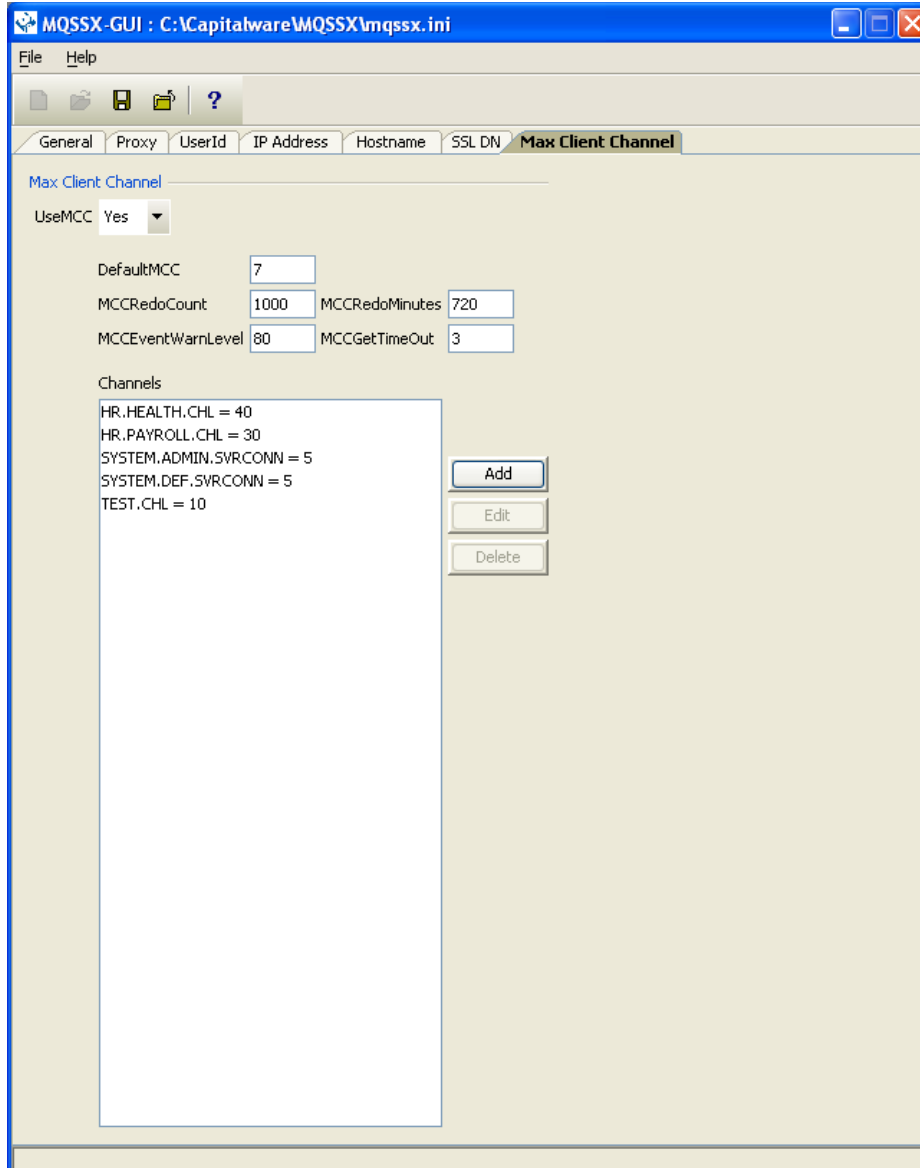


Click the **Yes** button to permanently remove the entry from the list.

4.7 Max Client Channel Tab

This section will describe various parameters on the Max Client Channel (MCC) tab of a MQSSX IniFile.

The following is a Max Client Channel Tab with default values:



The following are the IniFile parameters on the Max Client Channel Tab:

4.7.1 Set Maximum Number of Incoming Connections per Channel

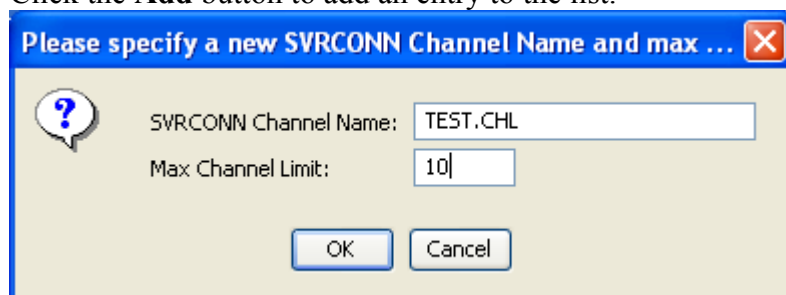
This section describes the necessary entries to set a maximum number of allowable connections per a given channel. This is controlled by the IniFile's property keyword 'UseMCC'. Setting 'UseMCC' to 'Y' (Yes) will cause the server-side security exit to look up channel's name as a property keyword in the IniFile.

For example, if 'UseMCC' is set to 'Y' and the incoming connection is on 'SYSTEM.ADMIN.SVRCONN', the server-side security exit will look up in the IniFile the keyword of 'SYSTEM.ADMIN.SVRCONN'. If the 'SYSTEM.ADMIN.SVRCONN' keyword is not found, then the server-side security exit will look up 'DefaultMCC' keyword in the IniFile.

- **DefaultMCC** is the default maximum number of connections allowed for the channel.
- **MCCRedoMinutes** keyword states that the server-side security exit should issue PCF command if more than 'x' minutes have passed since the last PCF command was issued. The default value for 'MCCRedoMinutes' is 720 minutes.
- **MCCRedoCount** keyword states that the server-side security exit should issue PCF command if more than 'x' connection attempts passed since the last PCF command was issued. The default value for 'MCCRedoCount' is 1000.
- **MCCEventWarnLevel** keyword provides a percent level of connected channels when a warning messages should be issued to the event queue. The default value for 'MCCEventWarnLevel' is 80 percent.
- **MCCGetTimeOut** keyword states that the server-side security exit should wait, after issues a PCF command, up to 'x' seconds for the response message from the command server. The default value for 'MCCGetTimeOut' is 3 seconds.

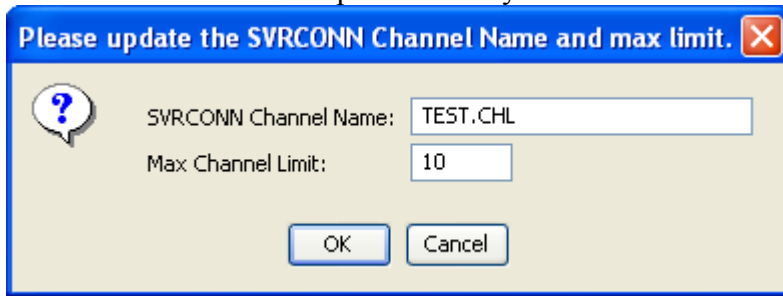
4.7.2 Managing MCC entries

Click the **Add** button to add an entry to the list.



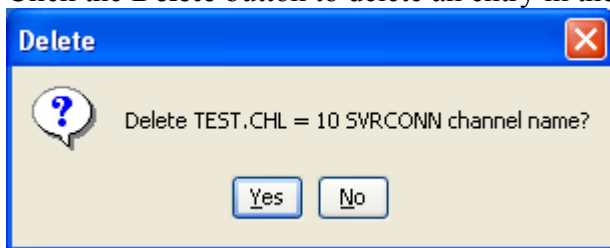
Input the channel name and the maximum number of connection to be allowed at any given time for this channel and then click the **Ok** button.

Click the **Edit** button to update an entry in the list.



Update the channel name and / or the maximum number of connection to be allowed at any given time for this channel and then click the **Ok** button.

Click the **Delete** button to delete an entry in the list.



Click the **Yes** button to permanently remove the entry from the list.

5 Appendix A – Frequently Asked Questions (FAQ)

Q. Can IniFiles be create on Windows for MQSSX on Unix?

A. Yes. Once the IniFile has been saved, the user can copy or ftp (in ASCII mode) the file to the remote server.

6 Appendix B – Support

The support for MQSSX-GUI can be found at the following location:

Online Help Desk Ticketing System at

www.capitalware.biz/phpst/

By email at:

support@capitalware.biz

By regular mail at:

Capitalware Inc.
Attn: MQSSX-GUI Support
1673 Richmond Street, Suite 524
London, Ontario N6G2N3
Canada

7 Appendix C – Summary of Changes

- MQSSX-GUI v2.2.5
 - Updated the layout of tabs
 - Added new keywords: UseAllowHostname, AllowHostname, UseRejectHostname and RejectHostname
- MQSSX-GUI v2.2
 - Updated the layout of tabs
 - Added new keywords: LicenseFile, UseSSLCertUserID, AllowSSLSSCert, UseSSLUserIDFromDN, SSLDNAttrName, SSLDNAttrStartPos, SSLDNAttrLength, UseAllowSSLDN, AllowSSLDN, UseRejectSSLDN and RejectSSLDN
- MQSSX-GUI v2.0
 - Updated the layout of tabs
 - Added new keywords: BackupLogFileCount, UseRejectIP, RejectIP, UseRejectUserID, RejectUserID and MCCGetTimeOut
- MQSSX-GUI v1.2.5
 - Added new keywords: RotateLogDaily, WriteToEventQueue, EventQueueName and MCCEventWarnLevel
- MQSSX-GUI v1.2
 - Updated default values for keywords.
- MQSSX-GUI v1.1
 - Updated keyword display.
- MQSSX-GUI v1.0
 - Initial release.

8 Appendix D – License Agreement

This is a legal agreement between you (either an individual or an entity) and Capitalware Inc. By opening the sealed software packages (if appropriate) and/or by using the SOFTWARE, you agree to be bound by the terms of this Agreement. If you do not agree to the terms of this Agreement, promptly return the disk package and accompanying items for a full refund.

SOFTWARE LICENSE

1. **GRANT OF LICENSE.** This License Agreement (License) permits you to use one copy of the software product identified above, which may include user documentation provided in on-line or electronic form (SOFTWARE). The SOFTWARE is licensed as a single product, to an individual user, or group of users for Multiple User Licenses and Site Licenses. This Agreement requires that each user of the SOFTWARE be Licensed, either individually, or as part of a group. A Multi-User License provides for a specified number of users to use this SOFTWARE at any time. This does not provide for concurrent user Licensing. Each user of this SOFTWARE must be covered either individually, or as part of a group Multi-User License. The SOFTWARE is in use on a computer when it is loaded into the temporary memory (i.e. RAM) or installed into the permanent memory (e.g. hard disk) of that computer. This software may be installed on a network provided that appropriate restrictions are in place limiting the use to registered users only.

2. **COPYRIGHT.** The SOFTWARE is owned by Capitalware Inc. and is protected by United States Of America and Canada copyright laws and international treaty provisions. You may not copy the printed materials accompanying the SOFTWARE (if any), nor print copies of any user documentation provided in on-line or electronic form. You must not redistribute the registration codes provided, either on paper, electronically, or as stored in the files mqssx.ini or any other form.

3. **OTHER RESTRICTIONS.** The registration notification provided, showing your authorization code and this License is your proof of license to exercise the rights granted herein and must be retained by you. You may not rent or lease the SOFTWARE, but you may transfer your rights under this License on a permanent basis, provided you transfer this License, the SOFTWARE and all accompanying printed materials, retain no copies, and the recipient agrees to the terms of this License. You may not reverse engineer, decompile, or disassemble the SOFTWARE, except to the extent the foregoing restriction is expressly prohibited by applicable law.

LIMITED WARRANTY

LIMITED WARRANTY. Capitalware Inc. warrants that the SOFTWARE will perform substantially in accordance with the accompanying printed material (if any) and on-line documentation for a period of 365 days from the date of receipt.

CUSTOMER REMEDIES. Capitalware Inc. entire liability and your exclusive remedy shall be, at Capitalware Inc. option, either (a) return of the price paid or (b) repair or replacement of the SOFTWARE that does not meet this Limited Warranty and that is returned to Capitalware Inc. with a copy of your receipt. This Limited Warranty is void if failure of the SOFTWARE has resulted from accident, abuse, or misapplication. Any replacement SOFTWARE will be warranted for the remainder of the original warranty period or thirty (30) days, whichever is longer.

NO OTHER WARRANTIES. To the maximum extent permitted by applicable law, Capitalware Inc. disclaims all other warranties, either express or implied, including but not limited to implied warranties of merchantability and fitness for a particular purpose, with respect to the SOFTWARE and any accompanying written materials.

NO LIABILITY FOR CONSEQUENTIAL DAMAGES. To the maximum extent permitted by applicable law, in no event shall Capitalware Inc. be liable for any damages whatsoever (including, without limitation, damages for loss of business profits, business interruption, loss of business information, or other pecuniary loss) arising out of the use or inability to use the SOFTWARE, even if Capitalware Inc. has been advised of the possibility of such damages.

9 Appendix E – Notices

Trademarks:

AIX, IBM, MQSeries, OS/2 Warp, OS/400, iSeries, MVS, OS/390, WebSphere, WebSphere MQ and z/OS are trademarks of International Business Machines Corporation.

HP-UX is a trademark of Hewlett-Packard Company.

Intel is a registered trademark of Intel Corporation.

Java, J2SE, J2EE, Sun and Solaris are trademarks of Sun Microsystems Inc.

Linux is a trademark of Linus Torvalds.

Mac OS X is a trademark of Apple Computer Inc.

Microsoft, Windows, Windows NT, and the Windows logo are trademarks of Microsoft Corporation.

UNIX is a registered trademark of the Open Group.

WebLogic is a trademark of BEA Systems Inc.